



MTHFR Monoclonal Antibody

Catalog No	YP-Ab-03413
Isotype	IgG
Reactivity	Human;Rat
Applications	WB;IHC;IF;ELISA
Gene Name	MTHFR
Protein Name	Methylenetetrahydrofolate reductase
Immunogen	Purified recombinant fragment of human MTHFR expressed in E. Coli.
Specificity	MTHFR Monoclonal Antibody detects endogenous levels of MTHFR protein.
Formulation	Ascitic fluid containing 0.03% sodium azide,0.5% BSA, 50%glycerol.
Source	Monoclonal, Mouse
Purification	Affinity purification
Dilution	WB: 1/500 - 1/2000. IHC: 1/200 - 1/1000. ELISA: 1/10000.. IF 1:50-200
Concentration	1 mg/ml
Purity	≥90%
Storage Stability	-20°C/1 year
Synonyms	MTHFR; Methylenetetrahydrofolate reductase
Observed Band	
Cell Pathway	cytosol,synapse,
Tissue Specificity	Brain,Liver,Lung,
Function	<p>catalytic activity:5-methyltetrahydrofolate + NAD(P)(+) = 5,10-methylenetetrahydrofolate + NAD(P)H.,cofactor:FAD.,disease:Defects in MTHFR are the cause of methylenetetrahydrofolate reductase deficiency (MTHFRD) [MIM:236250]. MTHFRD is autosomal recessive disorder with a wide range of features including homocysteinuria, homocysteinemia [MIM:603174], developmental delay, severe mental retardation, perinatal death, psychiatric disturbances, and later-onset neurodegenerative disorders.,disease:Defects in MTHFR may be a cause of susceptibility to folate-sensitive neural tube defects (folate-sensitive NTD) [MIM:601634]. The most common NTDs are open spina bifida (myelomeningocele) and anencephaly.,disease:Defects in MTHFR may be a cause of susceptibility to ischemic stroke [MIM:601367]; also known as cerebrovascular accident or cerebral infarction. A stroke is an acute neurologic event leadin</p>
Background	<p>The protein encoded by this gene catalyzes the conversion of 5,10-methylenetetrahydrofolate to 5-methyltetrahydrofolate, a co-substrate for homocysteine remethylation to methionine. Genetic variation in this gene</p>



influences susceptibility to occlusive vascular disease, neural tube defects, colon cancer and acute leukemia, and mutations in this gene are associated with methylenetetrahydrofolate reductase deficiency.[provided by RefSeq, Oct 2009],

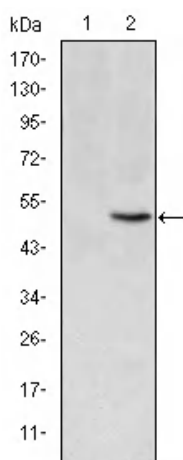
matters needing attention

Avoid repeated freezing and thawing!

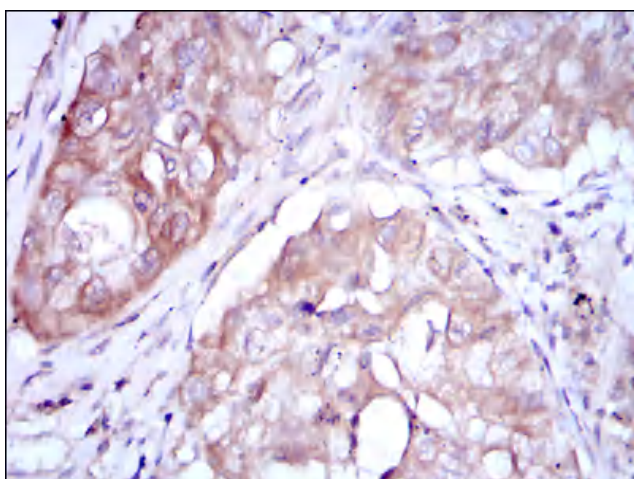
Usage suggestions

This product can be used in immunological reaction related experiments. For more information, please consult technical personnel.

Products Images



Western Blot analysis using MTHFR Monoclonal Antibody against HEK293 (1) and MTHFR-hlgGfc transfected HEK293 (2) cell lysate.



Immunohistochemistry analysis of paraffin-embedded lung cancer tissues with DAB staining using MTHFR Monoclonal Antibody.

